



News Update

26 September 2023

Invitation to a special afternoon



Please join us Saturday, 7 October from 2 - 4pm on Norfolk Beach for a working bee followed by refreshments and a general meeting.

We'll be tending the dunes and tackling weeds along the fenced beach zones, one of our favourite spots on a hot afternoon as there's always a breeze and we're shaded by trees. Catch-up with the latest news and contribute to decision-making over a cuppa at the meeting starting at 4.15pm. Agenda and minutes of the previous general meeting held during COVID times to be circulated next week.

Newcomers, including families are always most welcome.

Sign-on where the Coastcare flags fly near the BBQ's

Please wear covered shoes, long pants, preferably long-sleeved shirt, hat, sunscreen & insect repellent. Please call Secretary Jane Caldwell on 0479 139 527 or Graeme Roberts-Thomson on 0413352511 with any query.

Coastcare focus on shellfish reef restoration in Moreton Bay



A great night was had at Oasis earlier this month when we welcomed guest speaker, Robbie Porter, Senior Special Projects Officer of the Shellfish Revolution.

It was a shock for many to hear that 96 percent of the bay's shellfish reefs have been lost through harvesting for limestone for the building industry and human consumption. However, the tide has turned, reversed through community working with First Nations People, scientists and universities.

As President of OzFish's Moreton Bay Chapter, Robbie is a passionate advocate for restoring Moreton Bay's fish habitat and has successfully diverted hundreds of cubic metres of oyster shell from landfill to restore shellfish reefs in Pumicestone Passage.

Shellfish are recognised as "ecosystem engineers" due to their remarkable capacity to enhance marine environments as prodigious filter feeders, removing impurities and excess nutrients. One oyster filters 120 litres of water per day, helping to improve water clarity and quality, **see slide from presentation below –**

Why do we want them back?



Shellfish reefs provide complex structures also offer refuge, breeding grounds, and foraging habitats for a diverse array of marine species, including fish and invertebrates. Importantly, the intricate formations of shellfish reefs help bind sediment particles, reducing erosion and stabilising the seabed, vital for maintaining clear waters and preventing sediment runoff into sensitive areas.

Ozfish runs its reef building operations out of a special facility at the Port of Brisbane and Coastcare is planning a visit for interested members in the near future.

<https://ozfish.org.au/projects/moreton-bay-shellfish-reef-restoration/>

Celebrating shorebirds on Coochiemudlo Island



Beach stone curlew

The walk to celebrate **World Shorebird Day** organised by Conservation Volunteers Australia on Saturday 7 September attracted a good role-up of both visitors and locals. A perfect day with matching mid-morning low tide saw the group move from the western mangroves to Morwong. Along the way the following sightings including our shy beach stone curlews, (endangered in NSW and Vulnerable in Queensland) were recorded.



The gumboot & bino crew



Pied oystercatcher

Coastcare Date Claimers

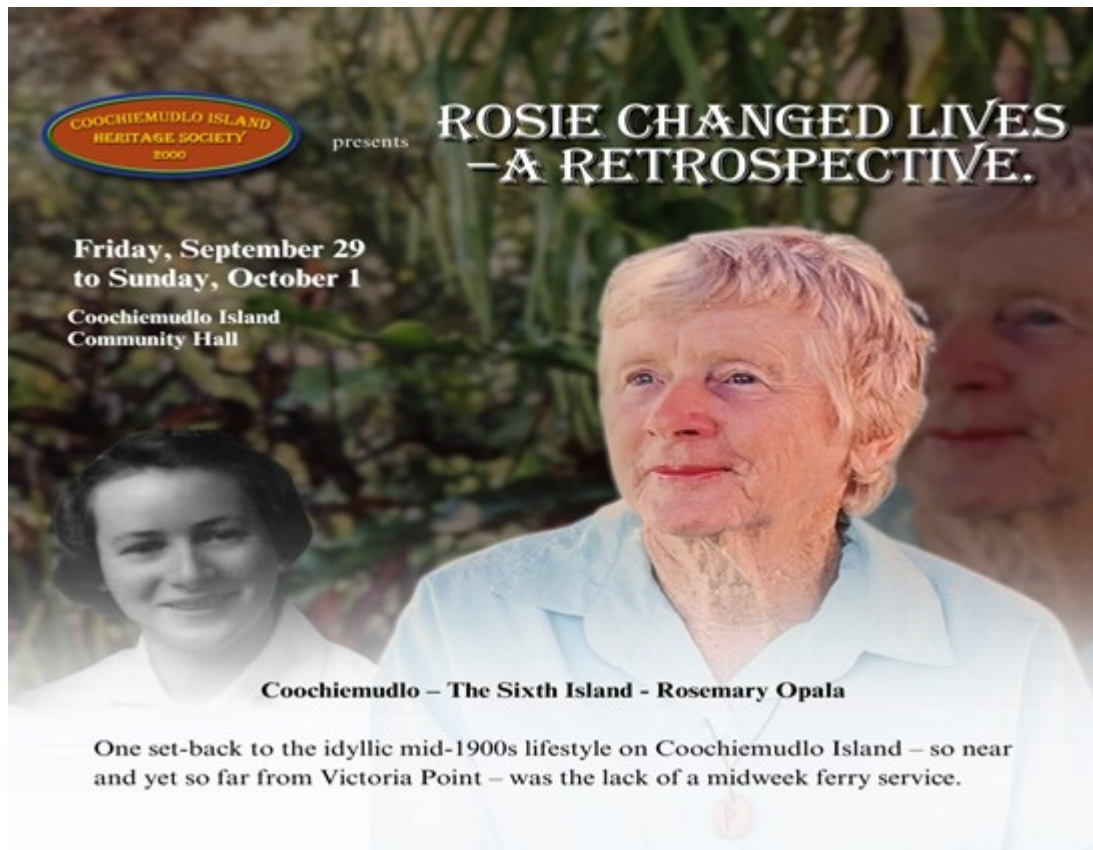
Saturday 7 Oct 2-4pm Dunecare, Norfolk Beach followed by General meeting at 4.15pm

Saturday 4 Nov 2.30-4.30pm Dunecare, location to be advised

Sunday 26 Nov Christmas markets, Lions Christmas cakes & puddings available

Friday 1 December 5pm Christmas Party at Mudlo

Reminder – this weekend's Rosemary Opala retrospective



Discover some of Rosemary's writing and art that chronicled her thoughts and her life: as a nurse in the 1940s and 1950s, including Peel Island, where she worked with those afflicted with Hansen's disease; loss of the natural environment; and life in Queensland, including life on Coochiemudlo Island.

Hear speakers share of Rosemary, the Artist, the Writer, the Nurse and Advocacy through Art and Writing. There will be a final session on Sunday, October 01, where reminiscences of Rosemary will be shared by some who knew her personally, and we can ask questions and talk about how life is now.

A reminder - is your annual membership due?

Membership fees

- Single annual membership \$2
- Family annual membership \$5
- Life Membership Single \$50
- Life Membership Family \$100

Choose your membership level and Direct Deposit to Coochiemudlo Island Coastcare Inc – Commonwealth Bank BSB 064-149 Account 10096929.

You can:

- Return your form with payment to 94 Victoria Parade, Coochiemudlo Island; or
- Email your form and a copy of your payment receipt to coochiecoastcare@gmail.com
(If paying electronically, please include your full name as the reference.)

Coochiemudlo Island Coastcare - Caring for your Island
www.coochiemudloislandcoastcare.org.au

This email was sent to <<Email Address>>

[why did I get this?](#) [unsubscribe from this list](#) [update subscription preferences](#)

Coochiemudlo Island Coastcare Inc · Where the Coastcare Flags fly! · Coochiemudlo Island, Queensland 4184 · Australia

